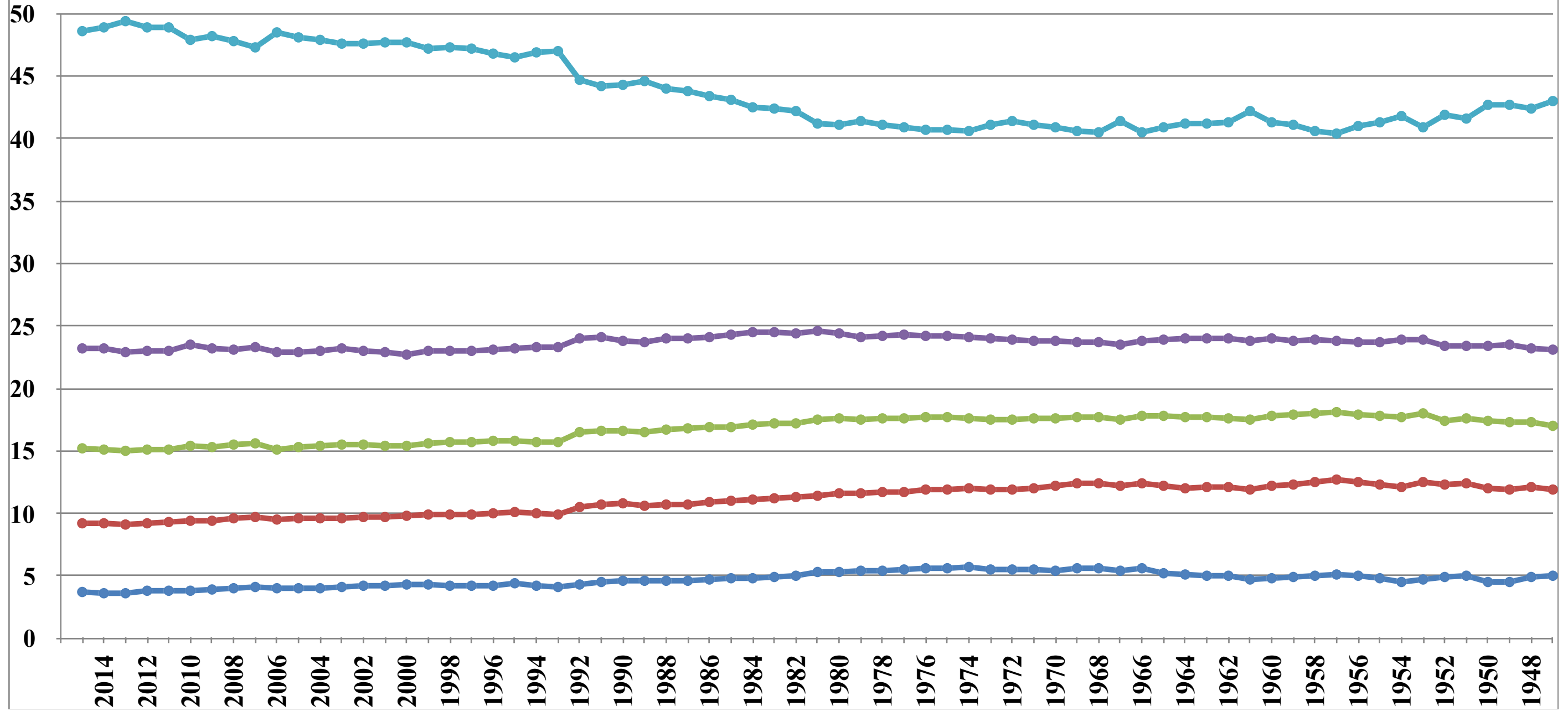


● Lowest 5th ● 2nd Fifth ● 3rd Fifth ● 4th Fifth ● Top Fifth

Share of Aggregate Income Received by Each Fifth of Families



Year	Lowest fifth	Second fifth	Third fifth	Fourth fifth	Highest fifth	Top 5 percent
2015	17,367	42,700	70,500	107,517	225,279	386,829
2014	16,129	40,728	66,976	103,234	217,271	370,511
2013	16,105	40,798	66,844	102,020	220,273	377,700
2012	16,036	39,418	64,483	98,559	209,105	363,724
2011	16,105	39,579	64,320	98,255	208,595	363,092
2010	16,223	40,126	65,401	99,781	203,419	340,129
2009	16,890	40,923	66,179	100,485	209,324	359,051
2008	17,510	41,970	67,793	101,455	209,603	359,900
2007	18,368	43,787	70,239	105,033	213,229	361,938
2006	18,267	43,224	68,753	103,912	220,287	389,935
2005	17,922	42,645	68,241	102,063	213,959	374,580
2004	17,817	42,408	68,063	101,688	211,634	368,699
2003	17,875	42,392	68,320	102,724	210,469	362,720
2002	18,467	42,845	68,334	101,634	209,866	367,290
2001	18,770	43,463	68,995	102,607	213,718	375,258
2000	19,436	44,439	69,842	102,934	215,965	382,694
1999	18,937	44,018	69,479	102,549	210,175	362,380
1998	18,204	42,845	67,812	99,446	204,685	358,257
1997	17,759	41,613	65,656	96,275	197,792	346,169
1996	17,136	40,398	63,902	93,373	189,038	327,066
1995	17,410	40,113	62,804	91,891	184,614	316,615
1994	16,440	38,896	61,423	90,795	182,976	313,912
1993	15,736	37,793	59,890	88,781	179,379	309,602
1992	15,872	38,282	60,479	87,909	163,589	257,560
1991	16,526	39,226	60,865	88,276	162,182	250,950
1990	17,301	40,354	62,148	89,376	166,101	260,620
1989	17,473	40,650	63,152	90,859	171,078	274,052
1988	17,131	39,893	62,079	89,155	163,585	255,596
1987	16,985	39,754	61,730	88,348	161,458	252,753
1986	17,003	39,260	60,823	86,906	156,531	237,703
1985	16,536	37,945	58,585	83,976	149,239	223,022
1984	16,347	37,428	57,746	82,577	143,516	207,499
1983	15,818	36,396	55,997	79,808	138,379	199,515
1982	16,054	36,424	55,618	78,899	136,334	195,058
1981	17,017	37,006	56,600	79,466	133,334	186,312
1980	17,563	38,234	57,759	80,133	134,919	191,798
1979	18,272	39,505	59,578	82,024	140,687	208,250
1978	18,097	39,246	58,931	81,193	137,776	201,896
1977	17,845	38,145	57,369	79,138	133,321	194,361
1976	17,922	37,927	56,576	77,301	130,103	190,419
1975	17,498	36,992	55,003	75,310	126,911	186,169
1974	18,212	38,445	56,128	76,899	129,576	188,999
1973	17,897	38,765	56,957	77,839	133,551	201,551
1972	17,440	38,054	55,895	76,330	132,382	202,949
1971	16,711	36,376	53,222	72,078	124,146	189,291
1970	16,696	36,918	53,380	72,005	123,821	188,546
1969	16,953	37,439	53,574	71,767	122,911	188,783
1968	16,431	35,835	51,197	68,469	116,996	180,353
1967	15,244	34,088	48,996	65,711	116,029	183,578
1966	15,010	33,322	47,679	63,828	108,934	167,270

	Lowest fifth	Second fifth	Third fifth	Fourth fifth	Highest fifth
2015	3.7	9.2	15.2	23.2	48.6
2014	3.6	9.2	15.1	23.2	48.9
2013	3.6	9.1	15.0	22.9	49.4
2012	3.8	9.2	15.1	23.0	48.9
2011	3.8	9.3	15.1	23.0	48.9
2010	3.8	9.4	15.4	23.5	47.9
2009	3.9	9.4	15.3	23.2	48.2
2008	4.0	9.6	15.5	23.1	47.8
2007	4.1	9.7	15.6	23.3	47.3
2006	4.0	9.5	15.1	22.9	48.5
2005	4.0	9.6	15.3	22.9	48.1
2004	4.0	9.6	15.4	23.0	47.9
2003	4.1	9.6	15.5	23.2	47.6
2002	4.2	9.7	15.5	23.0	47.6
2001	4.2	9.7	15.4	22.9	47.7
2000	4.3	9.8	15.4	22.7	47.7
1999	4.3	9.9	15.6	23.0	47.2
1998	4.2	9.9	15.7	23.0	47.3
1997	4.2	9.9	15.7	23.0	47.2
1996	4.2	10.0	15.8	23.1	46.8
1995	4.4	10.1	15.8	23.2	46.5
1994	4.2	10.0	15.7	23.3	46.9
1993	4.1	9.9	15.7	23.3	47.0
1992	4.3	10.5	16.5	24.0	44.7
1991	4.5	10.7	16.6	24.1	44.2
1990	4.6	10.8	16.6	23.8	44.3
1989	4.6	10.6	16.5	23.7	44.6
1988	4.6	10.7	16.7	24.0	44.0
1987	4.6	10.7	16.8	24.0	43.8
1986	4.7	10.9	16.9	24.1	43.4
1985	4.8	11.0	16.9	24.3	43.1
1984	4.8	11.1	17.1	24.5	42.5
1983	4.9	11.2	17.2	24.5	42.4
1982	5.0	11.3	17.2	24.4	42.2
1981	5.3	11.4	17.5	24.6	41.2
1980	5.3	11.6	17.6	24.4	41.1
1979	5.4	11.6	17.5	24.1	41.4
1978	5.4	11.7	17.6	24.2	41.1
1977	5.5	11.7	17.6	24.3	40.9
1976	5.6	11.9	17.7	24.2	40.7
1975	5.6	11.9	17.7	24.2	40.7
1974	5.7	12.0	17.6	24.1	40.6
1973	5.5	11.9	17.5	24.0	41.1
1972	5.5	11.9	17.5	23.9	41.4
1971	5.5	12.0	17.6	23.8	41.1
1970	5.4	12.2	17.6	23.8	40.9
1969	5.6	12.4	17.7	23.7	40.6
1968	5.6	12.4	17.7	23.7	40.5
1967	5.4	12.2	17.5	23.5	41.4
1966	5.6	12.4	17.8	23.8	40.5
1965	5.2	12.2	17.8	23.9	40.9
1964	5.1	12.0	17.7	24.0	41.2
1963	5.0	12.1	17.7	24.0	41.2
1962	5.0	12.1	17.6	24.0	41.3
1961	4.7	11.9	17.5	23.8	42.2
1960	4.8	12.2	17.8	24.0	41.3
1959	4.9	12.3	17.9	23.8	41.1
1958	5.0	12.5	18.0	23.9	40.6
1957	5.1	12.7	18.1	23.8	40.4
1956	5.0	12.5	17.9	23.7	41.0
1955	4.8	12.3	17.8	23.7	41.3
1954	4.5	12.1	17.7	23.9	41.8
1953	4.7	12.5	18.0	23.9	40.9
1952	4.9	12.3	17.4	23.4	41.9
1951	5.0	12.4	17.6	23.4	41.6
1950	4.5	12.0	17.4	23.4	42.7
1949	4.5	11.9	17.3	23.5	42.7
1948	4.9	12.1	17.3	23.2	42.4
1947	5.0	11.9	17.0	23.1	43.0

Table F-3. Mean Income Received by Each Fifth and Top 5 Percent of Families, All Races: 1966 to 2015

(Families as of March of the following year. Income in current and 2015 CPI-U-RS adjusted dollars (28))

Current Dollars**2015 Dollars**

Year	Lowest fifth	Second fifth	Third fifth	Fourth fifth	Highest fifth	Top 5 percent
2015	17,367	42,700	70,500	107,517	225,279	386,829
2014	16,129	40,728	66,976	103,234	217,271	370,511
2013 (39)	16,105	40,798	66,844	102,020	220,273	377,700
2013 (38)	16,391	40,207	65,037	98,911	210,311	365,012
2012	16,036	39,418	64,483	98,559	209,105	363,724
2011	16,105	39,579	64,320	98,255	208,595	363,092
2010 (37)	16,223	40,126	65,401	99,781	203,419	340,129
2009 (36)	16,890	40,923	66,179	100,485	209,324	359,051
2008	17,510	41,970	67,793	101,455	209,603	359,900
2007	18,368	43,787	70,239	105,033	213,229	361,938
2006	18,267	43,224	68,753	103,912	220,287	389,935
2005	17,922	42,645	68,241	102,063	213,959	374,580
2004 (35)	17,817	42,408	68,063	101,688	211,634	368,699
2003	17,875	42,392	68,320	102,724	210,469	362,720
2002	18,467	42,845	68,334	101,634	209,866	367,290
2001	18,770	43,463	68,995	102,607	213,718	375,258
2000 (30)	19,436	44,439	69,842	102,934	215,965	382,694
1999 (29)	18,937	44,018	69,479	102,549	210,175	362,380
1998	18,204	42,845	67,812	99,446	204,685	358,257
1997	17,759	41,613	65,656	96,275	197,792	346,169
1996	17,136	40,398	63,902	93,373	189,038	327,066
1995 (25)	17,410	40,113	62,804	91,891	184,614	316,615
1994 (24)	16,440	38,896	61,423	90,795	182,976	313,912
1993 (23)	15,736	37,793	59,890	88,781	179,379	309,602
1992 (22)	15,872	38,282	60,479	87,909	163,589	257,560
1991	16,526	39,226	60,865	88,276	162,182	250,950
1990	17,301	40,354	62,148	89,376	166,101	260,620
1989	17,473	40,650	63,152	90,859	171,078	274,052
1988	17,131	39,893	62,079	89,155	163,585	255,596
1987 (21)	16,985	39,754	61,730	88,348	161,458	252,753
1986	17,003	39,260	60,823	86,906	156,531	237,703
1985 (20)	16,536	37,945	58,585	83,976	149,239	223,022
1984	16,347	37,428	57,746	82,577	143,516	207,499
1983 (19)	15,818	36,396	55,997	79,808	138,379	199,515
1982	16,054	36,424	55,618	78,899	136,334	195,058
1981	17,017	37,006	56,600	79,466	133,334	186,312
1980	17,563	38,234	57,759	80,133	134,919	191,798
1979 (18)	18,272	39,505	59,578	82,024	140,687	208,250
1978	18,097	39,246	58,931	81,193	137,776	201,896
1977	17,845	38,145	57,369	79,138	133,321	194,361
1976 (17)	17,922	37,927	56,576	77,301	130,103	190,419
1975 (16)	17,498	36,992	55,003	75,310	126,911	186,169
1974 (16)(15)	18,212	38,445	56,128	76,899	129,576	188,999
1973	17,897	38,765	56,957	77,839	133,551	201,551
1972 (14)	17,440	38,054	55,895	76,330	132,382	202,949
1971 (13)	16,711	36,376	53,222	72,078	124,146	189,291
1970	16,696	36,918	53,380	72,005	123,821	188,546
1969	16,953	37,439	53,574	71,767	122,911	188,783
1968	16,431	35,835	51,197	68,469	116,996	180,353
1967 (12)	15,244	34,088	48,996	65,711	116,029	183,578
1966 (11)	15,010	33,322	47,679	63,828	108,934	167,270

Source: U.S. Census Bureau, Current Population Survey, Annual Social and Economic Supplements. For information on confidentiality protection, sampling error, nonsampling error, and definitions, see <http://www2.census.gov/programs-surveys/cps/techdocs/cpsmar16.pdf>