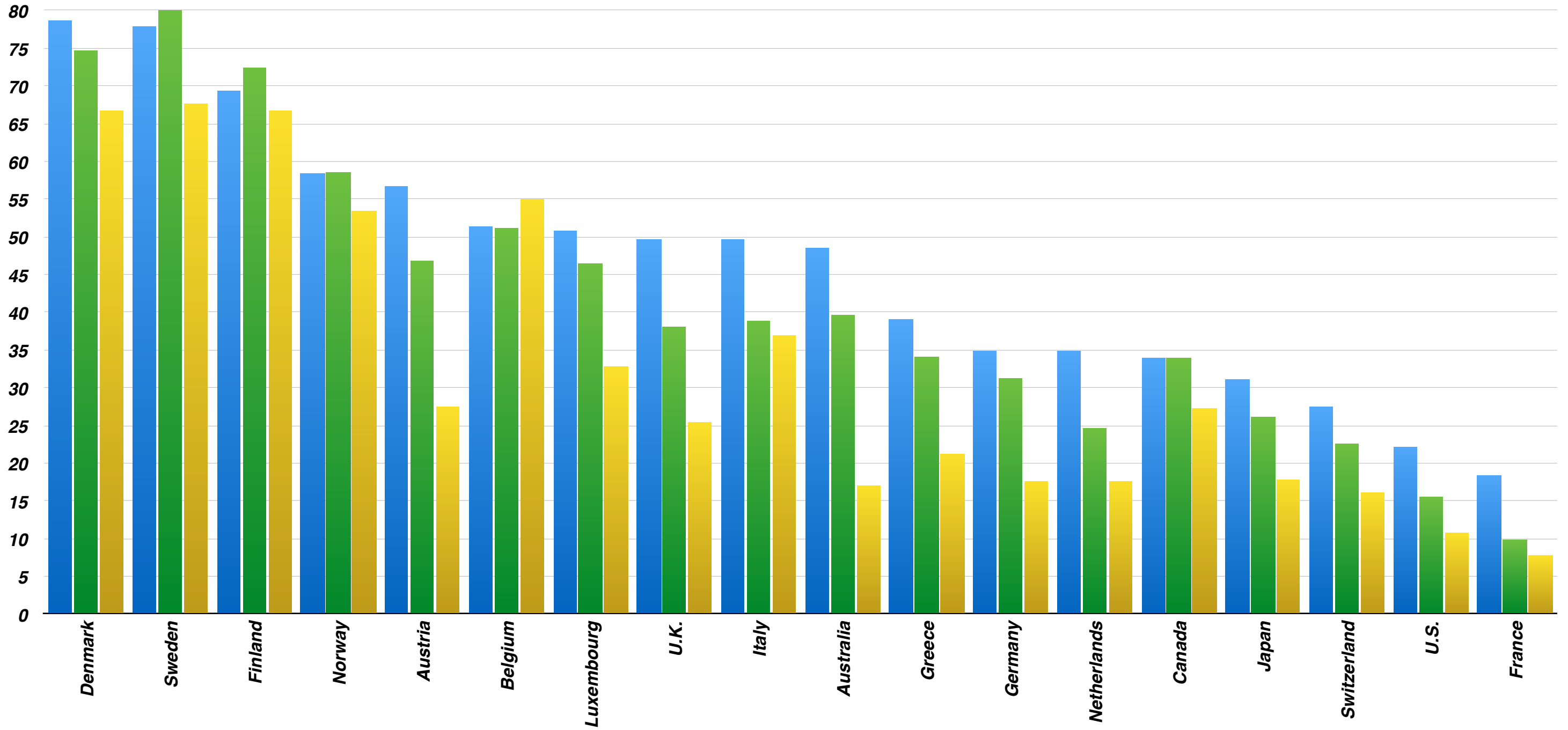


1980

1990

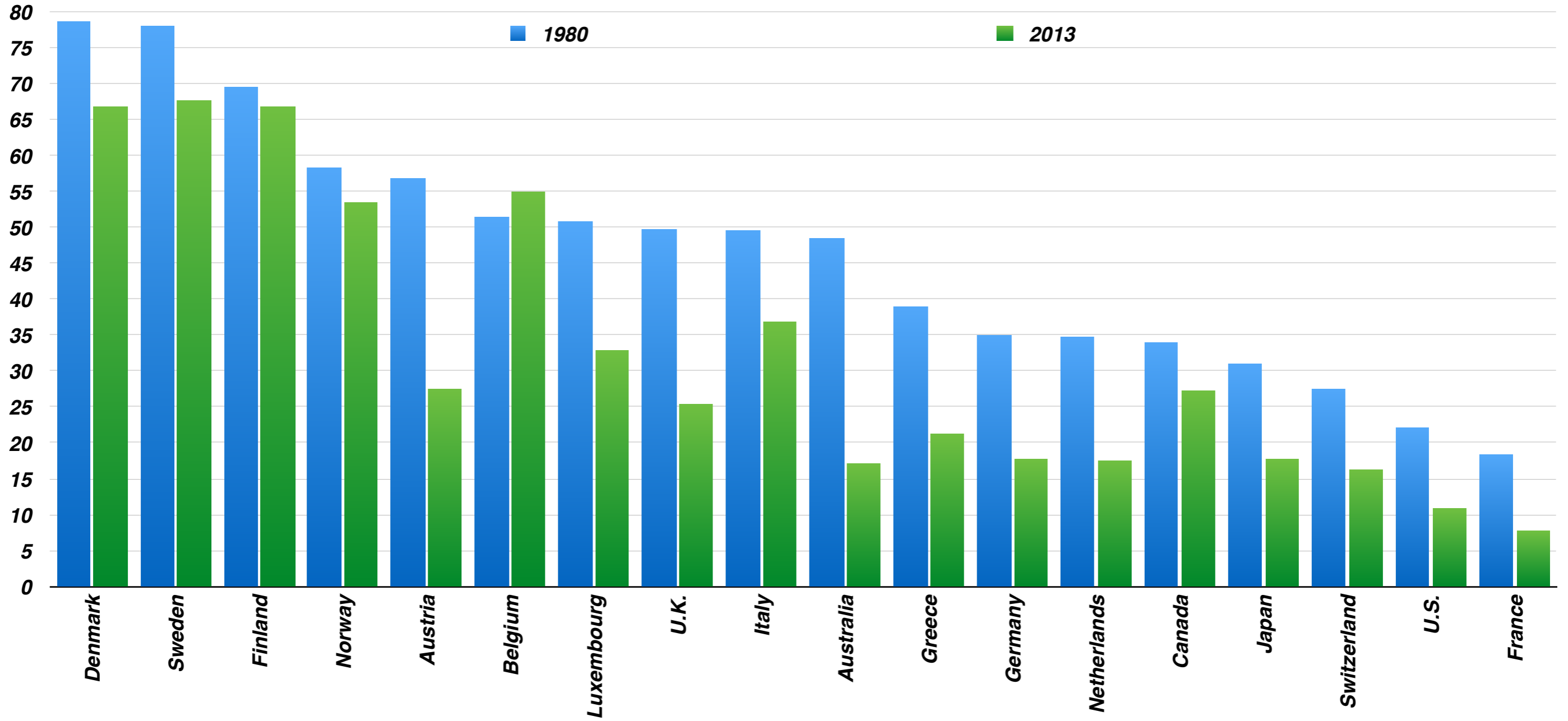
2013

### Unionization Rate (OECD Data)





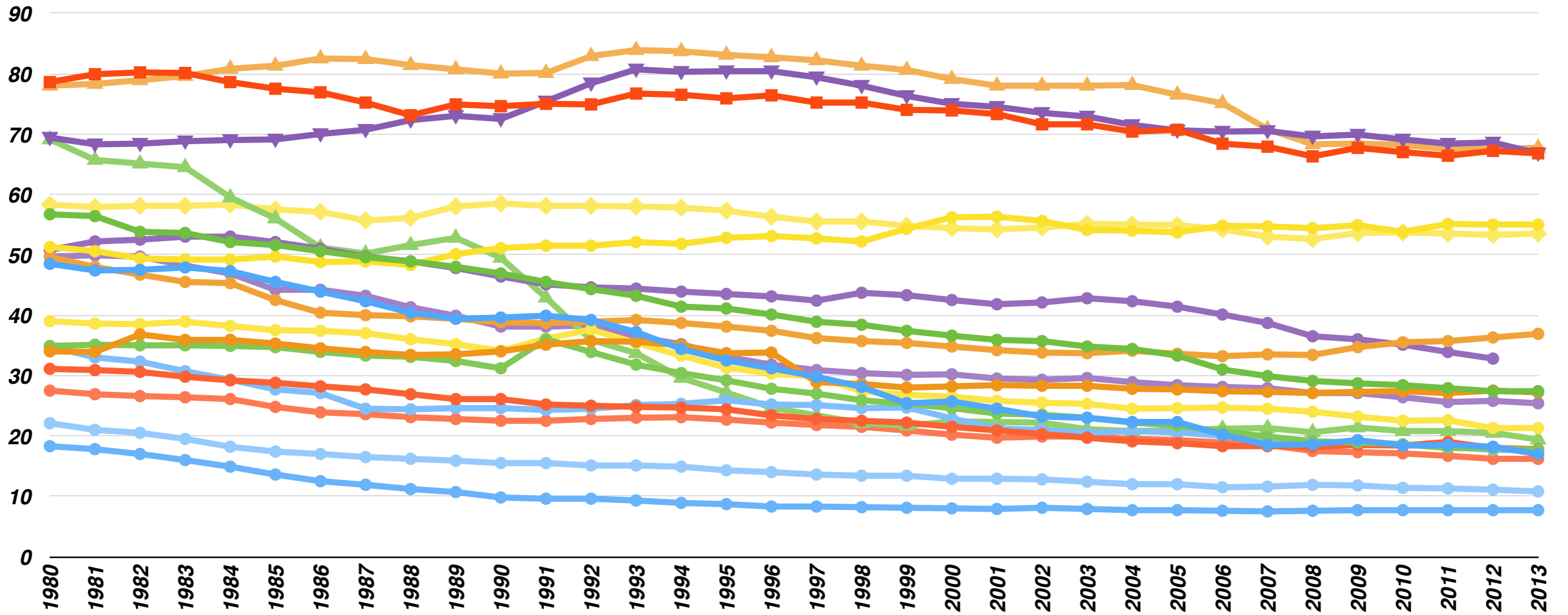
**Unionization Rate (OECD data)**





- Australia
- Austria
- Belgium
- Canada
- Denmark
- Finland
- France
- Germany
- Greece
- Italy
- Japan
- Luxembourg
- Netherlands
- New Zealand
- Norway
- Sweden
- Switzerland
- U.K.
- U.S.

**Unionization Rate 1980-2013 (OECD data)**



	<b>1980</b>	<b>1990</b>	<b>2013</b>
<b>Denmark</b>	78.6	74.6	66.8
<b>Sweden</b>	78.0	80.0	67.7
<b>Finland</b>	69.4	72.5	66.8
<b>Norway</b>	58.3	58.5	53.5
<b>Austria</b>	56.7	46.9	27.4
<b>Belgium</b>	51.3	51.1	55.0
<b>Luxembourg</b>	50.8	46.4	32.8
<b>U.K.</b>	49.7	38.1	25.4
<b>Italy</b>	49.6	38.8	36.9
<b>Australia</b>	48.5	39.6	17.0
<b>Greece</b>	39.0	34.1	21.3
<b>Germany</b>	34.9	31.2	17.7
<b>Netherlands</b>	34.8	24.6	17.6
<b>Canada</b>	34.0	34.0	27.2
<b>Japan</b>	31.1	26.1	17.8
<b>Switzerland</b>	27.5	22.5	16.2
<b>U.S.</b>	22.1	15.5	10.8
<b>France</b>	18.3	9.8	7.7

	<b>1980</b>	<b>2013</b>	
<b>Denmark</b>	78.6	66.8	
<b>Sweden</b>	78.0	67.7	
<b>Finland</b>	69.4	66.8	
<b>Norway</b>	58.3	53.5	
<b>Austria</b>	56.7	27.4	
<b>Belgium</b>	51.3	55.0	
<b>Luxembourg</b>	50.8	32.8	
<b>U.K.</b>	49.7	25.4	
<b>Italy</b>	49.6	36.9	
<b>Australia</b>	48.5	17.0	
<b>Greece</b>	39.0	21.3	
<b>Germany</b>	34.9	17.7	
<b>Netherlands</b>	34.8	17.6	
<b>Canada</b>	34.0	27.2	
<b>Japan</b>	31.1	17.8	
<b>Switzerland</b>	27.5	16.2	
<b>U.S.</b>	22.1	10.8	
<b>France</b>	18.3	7.7	

Table 1

	1980	1981	1982	1983	1984	1985	1986	1987	1988	1989	1990	1991	1992	1993	1994	1995	1996	1997	1998	1999	2000	2001	2002	2003	2004	2005	2006	2007	2008	2009	2010	2011	2012	2013
<b>Australia</b>	48.5	47.4	47.5	47.9	47.3	45.5	43.9	42.3	40.4	39.4	39.6	39.9	39.2	37.2	34.4	32.5	31.2	29.8	28.1	25.4	25.7	24.5	23.2	23.0	22.3	22.3	20.2	18.5	18.6	19.3	18.4	18.5	18.2	17.0
<b>Austria</b>	56.7	56.4	53.8	53.6	52.1	51.6	50.6	49.6	48.9	48.0	46.9	45.5	44.3	43.2	41.4	41.1	40.1	38.9	38.4	37.4	36.6	35.9	35.7	34.8	34.4	33.3	31.0	29.9	29.1	28.7	28.4	27.9	27.4	27.4
<b>Belgium</b>	51.3	50.6	49.4	49.2	49.2	49.7	48.8	48.9	48.3	50.1	51.1	51.5	51.5	52.1	51.8	52.8	53.1	52.7	52.2	54.3	56.2	56.3	55.6	54.1	54.0	53.7	54.8	54.7	54.4	54.9	53.8	55.1	55.0	55.0
<b>Canada</b>	34.0	33.9	36.8	35.9	35.9	35.3	34.5	33.9	33.4	33.5	34.0	35.1	35.7	35.6	35.0	33.7	33.8	28.9	28.6	28.0	28.2	28.4	28.3	28.3	27.8	27.7	27.4	27.3	27.1	27.3	27.4	27.1	27.5	27.2
<b>Denmark</b>	78.6	79.9	80.2	80.1	78.6	77.5	76.9	75.2	73.1	74.9	74.6	75.0	74.9	76.7	76.5	75.9	76.4	75.2	75.2	74.0	73.9	73.3	71.6	71.6	70.4	70.7	68.4	67.9	66.3	67.7	67.0	66.4	67.2	66.8
<b>Finland</b>	69.4	68.3	68.4	68.8	69.0	69.1	70.0	70.7	72.3	73.0	72.5	75.4	78.4	80.7	80.3	80.4	80.4	79.4	78.0	76.3	75.0	74.5	73.5	72.9	71.5	70.6	70.4	70.5	69.6	69.9	69.1	68.4	68.6	66.8
<b>France</b>	18.3	17.8	17.0	16.0	14.9	13.6	12.5	11.9	11.2	10.7	9.8	9.6	9.6	9.3	8.9	8.7	8.3	8.3	8.2	8.1	8.0	7.9	8.1	7.9	7.7	7.7	7.6	7.5	7.6	7.7	7.7	7.7	7.7	7.7
<b>Germany</b>	34.9	35.1	35.0	35.0	34.9	34.7	33.9	33.3	33.1	32.4	31.2	36.0	33.9	31.8	30.4	29.2	27.8	27.0	25.9	25.3	24.6	23.7	23.5	23.0	22.2	21.7	20.7	19.9	19.1	18.9	18.6	18.0	17.9	17.7
<b>Greece</b>	39.0	38.6	38.5	38.9	38.2	37.5	37.4	37.0	36.0	35.2	34.1	36.1	37.6	35.4	33.3	31.3	30.3	29.8	27.4	26.8	26.5	25.8	25.5	25.3	24.5	24.6	24.7	24.5	24.0	23.2	22.5	22.6	21.3	21.3
<b>Italy</b>	49.6	48.0	46.7	45.5	45.3	42.5	40.4	40.0	39.8	39.4	38.8	38.7	38.9	39.2	38.7	38.1	37.4	36.2	35.7	35.4	34.8	34.2	33.8	33.7	34.1	33.6	33.2	33.5	33.4	34.7	35.5	35.7	36.3	36.9
<b>Japan</b>	31.1	30.9	30.6	29.8	29.2	28.8	28.2	27.7	26.9	26.1	26.1	25.2	25.0	24.8	24.7	24.4	23.4	22.8	22.5	22.2	21.5	20.9	20.3	19.7	19.1	18.8	18.3	18.3	18.2	18.5	18.4	19.0	18.0	17.8
<b>Luxembourg</b>	50.8	52.2	52.5	53.0	53.0	52.1	51.0	49.7	48.9	47.8	46.4	45.1	44.6	44.4	43.9	43.5	43.1	42.4	43.7	43.3	42.5	41.8	42.1	42.8	42.3	41.4	40.1	38.7	36.5	36.0	35.1	33.9		32.8
<b>Netherlands</b>	34.8	33.0	32.3	30.7	29.3	27.7	27.1	24.5	24.4	24.6	24.6	24.3	24.5	25.1	25.3	25.9	25.2	25.1	24.6	24.7	22.9	21.2	21.0	20.5	20.8	20.6	20.0	19.3	18.8	19.1	18.6	18.2	17.7	17.6
<b>New Zealand</b>	69.1	65.7	65.1	64.5	59.5	56.0	51.2	50.2	51.6	52.8	49.5	42.9	35.9	33.7	29.6	27.2	24.7	23.4	22.1	21.7	22.4	22.3	22.2	21.1	20.8	20.9	21.2	21.3	20.6	21.4	20.8	20.8	20.5	19.4
<b>Norway</b>	58.3	57.9	58.1	58.1	58.3	57.5	57.1	55.7	56.1	58.0	58.5	58.1	58.1	58.0	57.8	57.3	56.3	55.5	55.5	54.8	54.4	54.2	54.5	55.1	55.0	54.9	54.2	53.0	52.6	53.6	53.7	53.5	53.3	53.5
<b>Sweden</b>	78.0	78.3	78.9	79.6	80.8	81.3	82.5	82.4	81.4	80.7	80.0	80.1	82.9	83.9	83.7	83.1	82.7	82.2	81.3	80.6	79.1	78.0	78.0	78.1	76.5	75.1	70.8	68.3	68.4	68.2	67.5	67.5	67.7	
<b>Switzerland</b>	27.5	26.9	26.6	26.4	26.1	24.8	23.9	23.6	23.1	22.8	22.5	22.5	22.8	23.0	23.1	22.7	22.2	21.8	21.5	20.9	20.2	19.7	19.9	19.9	19.5	19.3	18.9	18.5	17.5	17.3	17.1	16.7	16.2	16.2
<b>U.K.</b>	49.7	49.9	49.7	48.2	46.9	44.2	44.2	43.2	41.3	39.9	38.1	38.1	38.3	36.4	35.2	33.1	31.8	30.9	30.4	30.1	30.2	29.5	29.3	29.6	28.9	28.4	28.1	27.9	27.1	27.1	26.4	25.6	25.8	25.4
<b>U.S.</b>	22.1	21.0	20.5	19.5	18.2	17.4	17.0	16.5	16.2	15.9	15.5	15.5	15.1	15.1	14.9	14.3	14.0	13.6	13.4	13.4	12.9	12.9	12.8	12.4	12.0	12.0	11.5	11.6	11.9	11.8	11.4	11.3	11.1	10.8